

Pecono Cottages
All have Complimentary Views

CAPACITY—Pecono Manor Inn accommodates two hundred guests. In plan and equipment it is new and thoroughly modern. It has steam heat, electric light, passenger elevator, hot and cold water, and thirty private and public bathrooms. The management is in experienced and capable hands, and the table is unusually excellent.

Pecono Manor Cottage stands about two hundred yards east of the Inn, on the sheltered slope leading down to Lake Minnauin. It commands a fine view of the Swiftwater and Paradise Valleys. It is heated throughout, and has complete kitchen and dining-room arrangements, making it suitable for independent use when the Inn is closed.

ROADS AND AUTOMOBILES—Of the forty miles lying between Pecono Inn and Wilkes-Barre, the State Highway Department has recently converted the eastern half into a beautiful parkway. As this passes through Pecono Summit, Naomi Pines, Pecono Pines Assembly, Pecono Lake, Scudderaville and Bear Creek, it offers rare opportunities for automobile driving and riding. The trip from Philadelphia to Pecono Manor by automobile is



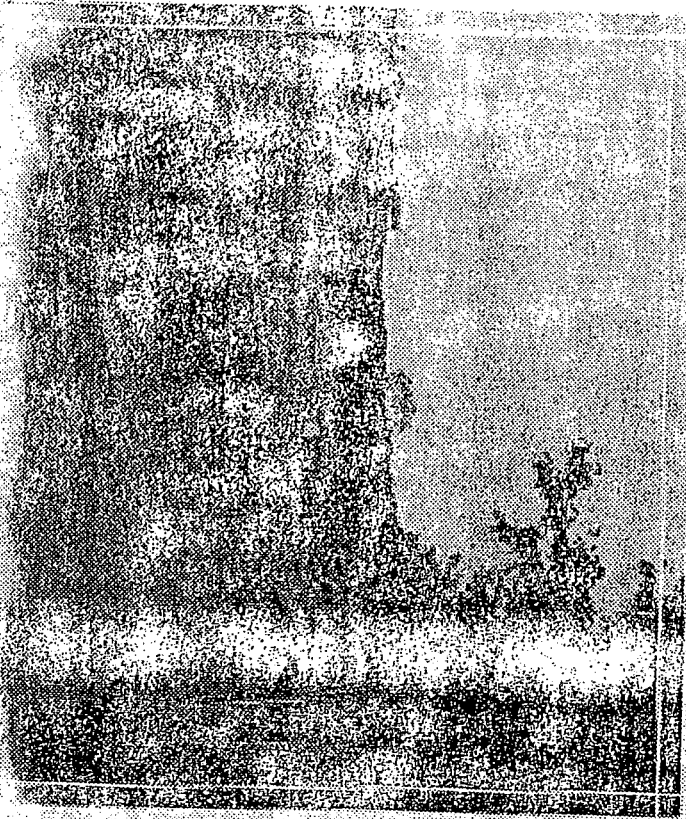
Social Hall—Manor Cottage

one of the most delightful in this part of the country, and is becoming yearly more popular. One of the most charming routes is that by Bethlehem and through the famous Wind Gap, renowned for its beauty of scenery. The route by way of the Delaware Water Gap is also a favorite.

Ample accommodations for automobiles, carriages and horses are provided at the Inn garage and stables at reasonable rates.

AMUSEMENTS—Lake Minnauin and the Swiftwater are well stocked with brook trout, and the fishing in the lake and the pools of the stream above is reserved for guests and cottagers. The other streams of the Pecono region are also famous for trout fishing.

A well-appointed nine-hole golf course, laid out by H. H. Barber, of Garden City, L. I., is maintained on the Manor property. The course, among the highest in the eastern portion of the United States, embodies a pleasing variety through its conformity to the roll mountain sides,

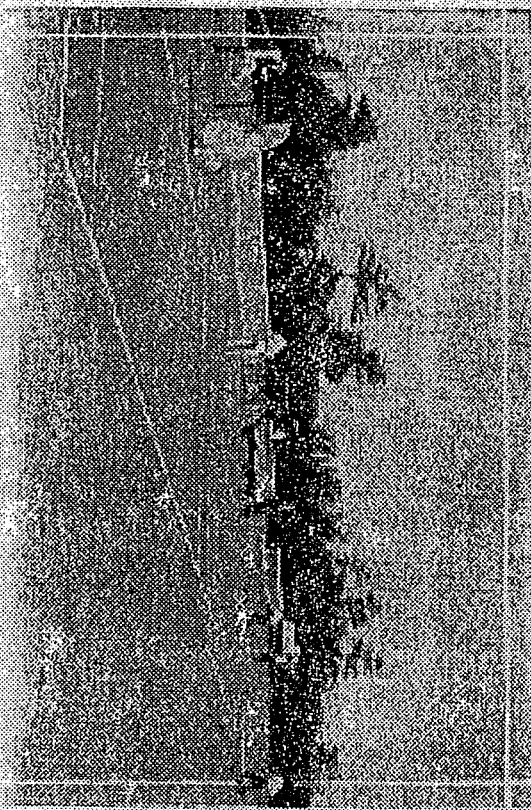


Golf Course Clubhouse in the distance

at the same time commanding extended views over the adjoining hill ranges and valleys.

An attractive clubhouse has been erected at a point overlooking the first and ninth holes, from the broad verandas of which the game can be enjoyed by those who do not enter the sport.

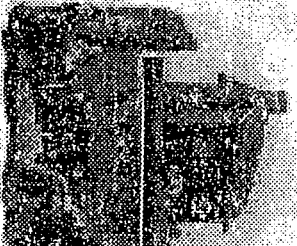
A number of good saddle-horses are provided for those who enjoy riding—in fact, this and lung tramp are the way in which to enjoy the Pesonoy, as many attractive points are inaccessible for the automobile or carriage. A half day's tramp to the observatory on Spruce Mountain will well repay those who do

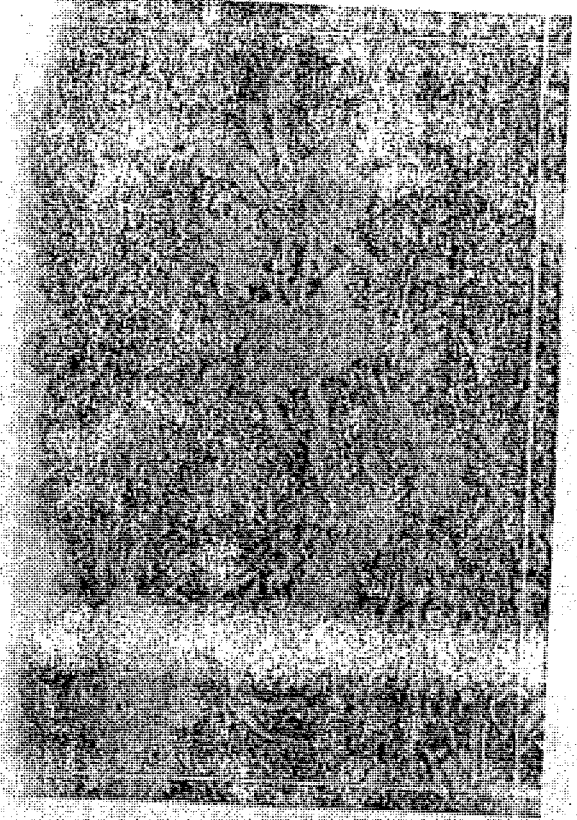


Lake Inn's Course

not care for a longer tramp, while for the more venturesome there is a nine mile hike to Pecosso Knob, the highest point in Eastern Pennsylvania—two thousand two hundred and fifty feet, where the moonlight or early dawn can be enjoyed as nowhere else in this part of the country. Here the owner has recently built a stone bungalow, and has courteously offered it for the use of the Manor guests; accommodations being provided for all night parties.

A number of rate boats are for hire on the lake. A Water Carnival and other special entertainments given on the lake have been much enjoyed and appreciated. Horses and carriages for driving may be had at the Inn stables. A separate building has been erected for a bowling alley, where this and other similar games of skill afford much enjoyment, especially in rainy weather. There are excellent tennis-courts and a croquet ground. A dark-room is provided for photographers.





There are separate play-rooms for children, with many special resources for their amusement.

Rhododendron bloom is probably unappreciated in Grandeur by any other native flower in the eastern states. As the buds are formed the previous autumn, there promises to be a display of unusual beauty this season, beginning about June twenty-fifth and lasting until the middle of July. To witness this alone is well worth a visit to the Manor.

METTINGS AND LECTURES.—One of the valuable features of the Inn is a large assembly-room, in which a Friends' meeting for worship is held on first-day mornings at half-past ten, to which all are invited. There are also other places of worship near, and those wishing to attend can procure carriages for that purpose. Otherwise the library is closed on first-days. Frequent lectures and entertainments are also given in the assembly-room.

LIBRARY.—An exceptionally well selected library of two thousand volumes is at the disposal of the guests.

Pocono Manor Inn opens about the middle of Sixth month (June), and remains open until near the middle of Tenth month (October). Many rooms have already been

engaged by regular guests, who have learned by previous experience the advisability of securing rooms at the earliest possible date.

A number of cottages are for rent, and table board may be had at the Inn. Camping parties may hire tents and fixtures.

For further information and rates address Pocono Manor Association, Pocono Manor, Monroe County, Pa. If you write before Sixth month 10th, address Pocono Manor Association, 918 Stephen Girard Building, Philadelphia, Pa.

For accommodations at the Manor Cottage during the autumn, winter and spring, address L. M. Dengler, Pocono Manor, Monroe Co., Pa.

□ □

Fall of the 19th century



APPROACHES TO POCONO MANOR

To reach Pocono Manor from Philadelphia, take the Pennsylvania Railroad from Broad Street Station to Pocono Summit.

From New York City, take Delaware, Lackawanna and Western Railroad from foot of Barclay or Christopher Streets to Pocono Summit. Excursion rate tickets to Pocono Summit can be procured throughout the year. Those issued after Sixth month 1st are good for the season.

Baggage should be plainly tagged to "Pocono Manor Inn, Pocono Summit Station, Delaware, Lackawanna and Western Railroad, Monroe County, Pa."

Guests should advise the manager in advance of the time of their expected arrival to insure being met at the station by the Inn coaches. The summer schedule on the Pennsylvania Railroad takes effect in Sixth month. The time of travel from Philadelphia or New York is about four hours. There are three or four express trains each way daily.

Pocono Manor is the post-office. Mail is received and sent out three times a day. The Inn also has local and long-distance telephone connections, and telegrams are transmitted by telephone to and from Pocono Summit, Delaware, Lackawanna and Western Railroad.

The guide staff at The Rod and Gun Club has the ability to show you more than the Poconos. Our guides currently guide Central, PA and the Lake Ontario Region of New York.

Central, PA

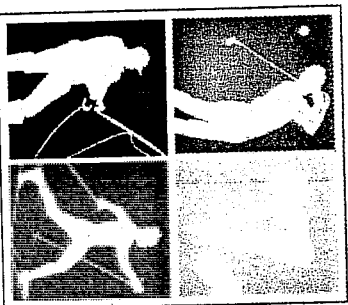


Fly Fish for wild brown and rainbow trout on Spring Creek, Fishing Creek and Penns Creek. These fertile streams provide excellent fishing for healthy wild fish with many possibilities for large fish. Fish your choice of streams for two days and spend the night in a local bed and breakfast.

Lake Ontario Tributaries



Walk / Wade or Drift boat fishing on the Salmon River and Southern Lake Ontario Tributaries for large brown trout and steelhead. Learn traditional fly fishing methods for catching 8-15 lb lake run trout on these scenic waters. Lodging available for 2 day trips.



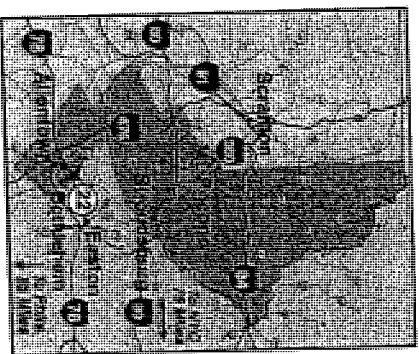
**THE INN
AT POCONO MANOR**

While Fishing or Shooting at The Rod and Gun Club enjoy the benefits of staying at The Inn at Pocono Manor. For package rates and room availability contact the Inn at 570-839-7111 or www.theinnatpoconomanor.com

Special Bed and Breakfast Rates for Anglers

Single Rate \$129.00 mid week \$149.00 weekend

Double Occupancy Rate \$139.00 mid week
\$179.00 weekend



**The Rod and Gun Club
at Pocono Manor**



**Orvis Endorsed Fly Fishing
Lodge and Guide Service**

570-839-1688

www.therodandgunclub.com

P.O. Box 1 Route 940 & 314

Pocono Manor, PA 19349

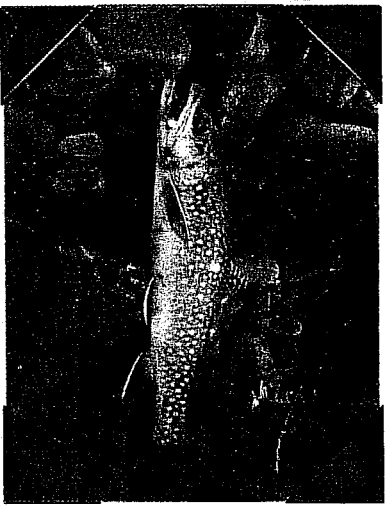


Swiftwater Creek

Fly fish over 2.5 miles of secluded, private water at The Rod & Gun Club at Pocono Manor. The club's crew of experienced Orvis endorsed guides and instructors are eager to share their tricks and techniques for outwitting our wily, wild brookies. Surrounded by 3500 acres of heavily wooded estate land, this crystal clear stream provides technical small stream fishing in a secluded setting.

Whether you are just beginning your fly fishing adventures or are a well-traveled, experienced angler, Pocono Manor offers the perfect setting for a memorable day on the water.

Swiftwater Walk/Wade Trips	
4 hours	\$150.00
8 hours	\$265.00
1 or 2 anglers	



Pocono Streams

The Pocono Mountain Region of Pennsylvania is well known for its many scenic trout streams. From the historic Brodhead Creek water shed to the big waters of the Lehigh River, The Rod and Gun Club guides know them all. These are the rivers on which we work and play on a regular basis. With our local knowledge and many years of experience you are bound to have unique experience on our favorite waters. Year round fishing is available, but the best fishing and hatches occur from mid April to the end of June.

Enjoy walk and wade opportunities on small creeks or large freestone rivers throughout the Poconos. There are over a dozen streams, creeks and rivers within a 45 minute drive from Pocono Manor with good populations of wild and stocked trout.

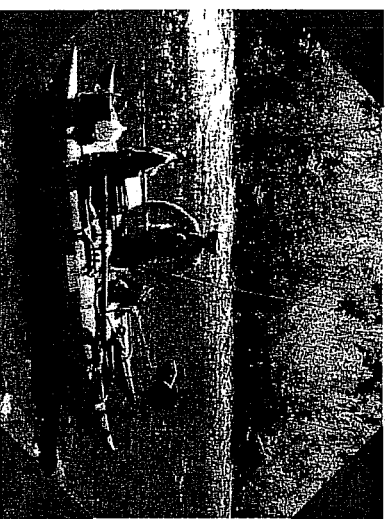
Pocono Walk/Wade Trips	
4 hours	\$150.00
8 hours	\$230.00
1 or 2 anglers	
Lunch is included	

Lehigh River

The Lehigh River is one of the up and coming rivers on the east coast. This once polluted river is now filled with good sized stocked and holdover trout. From the Francis Walter Dann near White Haven, down stream to the Delaware River the Lehigh has proven to be a great fishery with a diverse population of insects and forage fish. The trout and small mouth bass in this river grow fast and feed well and provide a great fight in the deep pools and fast runs.

The Lehigh is one of the few rivers where a drift boat can be used and is sometimes necessary to properly fish the river. Our guides have fished the Lehigh for many years and know its waters well. Drift trips are available from April to October and are available for 1 or 2 anglers. Walk/Wade fishing is available for confident waders.

Drift Boat Trips	
6 hours	\$250.00
8 hours	\$350.00
Boats hold up to 2 anglers	





Pocono Manor

INN & GOLF RESORT

June 15, 1996

Regional Water Management Program Manager
2 Public Square
Wilkes-Barre, PA 18711-0790

re: **NPDES Permit PAS 10S042 Lackawanna County Rail Authority**
Pennsylvania Bulletin Vol. 26, Number 23, June 8, 1996

Dear Regional Manager,

The above mentioned application for the discharge of storm water by the applicant, and the proposed construction and ultimate discharge of collected storm water from this proposed site by the applicant has caused alarm to the residents and guests of Pocono Manor.

The direct flow of storm water and any subsequent controlled discharges from this site and the proposed intensive industrial applications which are proposed to be staged from this site cause serious concern to Pocono Manor Inn and the residential community of Pocono Manor who are served and have been served by Kettle Springs and it's waters since the early 1900's.

Having recently been nominated to the National Register of Historic Places as an Historic District, Pocono Manor's water source via Kettle Springs is a direct recipient of the waters from this site. The discharge from the construction storm water and the potential for pollutant's from the proposed operations pose potential serious peril for those who have historically depended on the water resource of Kettle Springs. } ±

The present site with it's impervious surface has been the direct contributor to the erosion and scaring of our adjacent property. This flow is spilling into the head water of Indian Run which has it's point of origin on our property and empties into our Kettle Springs. }

"Designated Historic District"

Several years ago Kettle Springs tested positive to containing traces of toxins consistent with those discovered on the adjacent property to the site of discussion. It's contamination caused it to be deemed a **Super Fund Clean Up Site** and has been monitored since that time.] II

This proposed site presently causes serious erosion to the adjoining property which is owned and operated by Ireland Hotels d/b/a Pocono Manor Inn & Golf Resort. The historic facts surrounding the effects of water emitting from this area and site, and it's potential to threaten the water resource and the quality of life of the Community of Pocono Manor causes serious concerns to it's population.

I respectfully request that a public hearing be held and an opportunity be granted to have input from those directly effect by this proposed discharge.

Sincerely,



James Ireland
President Ireland Hotels

cc: Monroe County Conservation District
Jeremiah J. Cardamone Esq.
Brian Golden Esq.
Pennsylvania Historical and Museum Commission
Secretary of the Interior, National Park Service
Jean K. Wolf

Location of
Kettle Spring

STILLWATER LAKE

POCONO SUMMIT

RINSBERRY HEIGHTS

HOOHAN CHURCH

TRINITY P.E. CHURCH

WILDERNESSES

LITTLE SUMMIT

SAND PIT (New Jack)

GOLF CLUB HOUSE

KETTLE SPRING

WHITE OAK SWALE SPRING

MONTENESQUA RUINS

WILKESBARRE

CAMP POMANOCRA

BAILY SPRING

SWIFTWATER FALLS

CAMP HEMLOCK

THE INN

LAKE DEER

POCONO MANOR

AND VICINITY
(4 inches = 1 mile)
1930.

- | | | | |
|-------|----------------|---------|-----------------------------|
| OR.L. | = REST LODGE | | = FOOT PATH OR OLD LOG ROAD |
| | = HOUSE | | = FIRE LANE |
| | = BARN | | = GOLF FAIRWAY |
| | = CHURCH | | = SPRING |
| | = SCHOOL | | = GOLF COURSE BOUNDARY |
| | = R.R. STATION | | = RUINS |
| | = CEMENT ROAD | | = LAKE + DAM |
| | = GOOD ROAD | | = QUARRY |
| | = POOR ROAD | | = CREEK |
| | = TRAIL | 1825ft. | = FEET ABOVE SEA LEVEL |

SPRUCE MOUNTAIN

BEAR MOUNTAIN

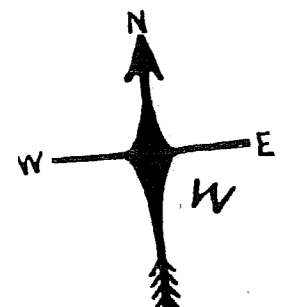
SULLIVAN MOUNTAIN

WILDERNESSES

WHITE OAK RUN

DEER POND

SULLIVAN LAKE



STATE FISH & GAME PRESERVE
LAKE 2.5 MILES

Crescent Lake

STATE FISH & GAME PRESERVE
ROAD
(ARROW OF STONES IN PATH)
POLING POLES (5 MILES)

WISCHSSET LAKE

STROUSSBURG
LACKAWANNA
13 MILES

TRAIL