



All about the rain garden at Sarah Street Grill



Quaker Alley, Stroudsburg, Pa.

In partnership with Sarah Street Grill, Brodhead Watershed Association created a garden to catch runoff from the restaurant's roof and parking lot. The soil and native plants absorb the polluted water, preventing it from reaching the nearby creek and your water supply.

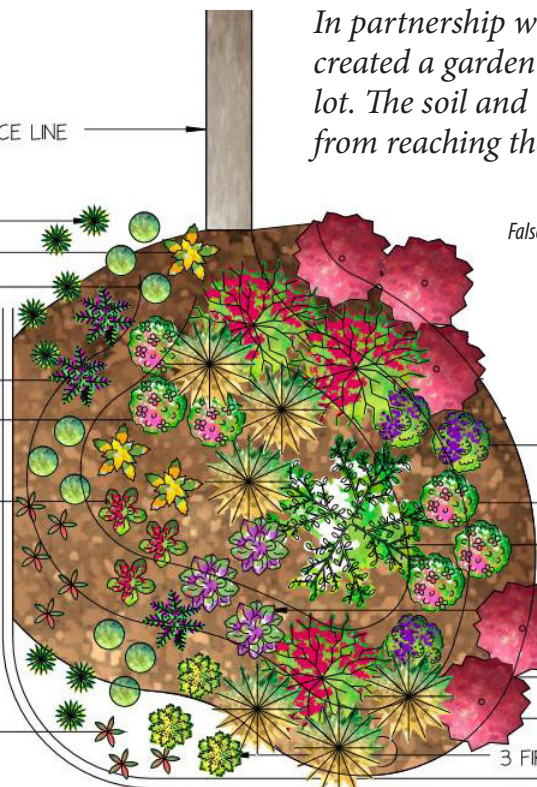
EXISTING WALL AND FENCE LINE

8 GREEN AND GOLD
3 FALSE SUNFLOWER
9 SOFT RUSH

3 BLUE FLAG IRIS
6 MARSH MILKWEED

3 CARDINAL FLOWER

8 BUTTERFLY WEED



False sunflower



Butterfly weed

3 NEW YORK IRONWEED

1 SILKY DOGWOOD

4" GRATE DRAIN

3 JOE PYE WEED

5 GRO-LOW FRAGRANT SUMAC

3 WINTER RED HOLLY

6 RED SWITCH GRASS

3 FIREWORKS ROUGH-LEAVED GOLDENROD



Cardinal flower

COMMON NAME	LATIN NAME	MOISTURE	HEIGHT	SPREAD	SPACING
Blue flag iris	<i>Iris versicolor</i>	WET	2-3'	2-3'	12"
Cardinal flower	<i>Lobelia cardinalis</i>	WET	3-4'	2-3'	
Marsh marigold	<i>Caltha palustris</i>	WET	8-12"	12-18"	1'
False sunflower	<i>Heliopsis helianthoides</i>	MOIST	4-6'	3-5'	2'
Fireworks rough-leaved goldenrod	<i>Solidago rugosa</i>	MOIST	3-4'	2-3'	1'
Green and gold	<i>Chrysogonum virginianum</i>	MOIST	6"	12"	10"
Joe Pye weed	<i>Eupatorium purpureum</i>	MOIST	5-6'	3-4'	2'
Soft rush	<i>Juncus effusus</i>	MOIST	3'	1-2'	12"
New York ironweed	<i>Vernonia noveboracensis</i>	MOIST	4-7'	2-4'	12"
Red switchgrass	<i>Panicum virgatum</i>	MOIST-DRY	2-3'	2'	18"
Butterfly weed	<i>Asclepias tuberosa</i>	DRY	18-24"	2'	12"

SHRUBS

Silky dogwood	<i>Cornus amomum</i>	MOIST	6-12'	6-12'	
Winter red holly	<i>Ilex verticillata</i>	MOIST-WET	6-8'	6-8'	
Gro-low fragrant sumac	<i>Rhus aromatica</i>	DRY-MEDIUM	2-6'	6-10'	



Joe Pye weed



Blue flag iris

Mike Wilk of Monroe County Conservation District was engineering designer and supervisor of the garden, and Robin Petras was landscape designer. BWA thanks them for their volunteer work. Matt Thompson of Absolute Design Contracting prepared the site, which he found to be a former dump. Wayne Ross and Ross & Ross Nursery of Cresco supplied the native plants and planted the garden.