



# All about the rain gardens at East Stroudsburg High School South

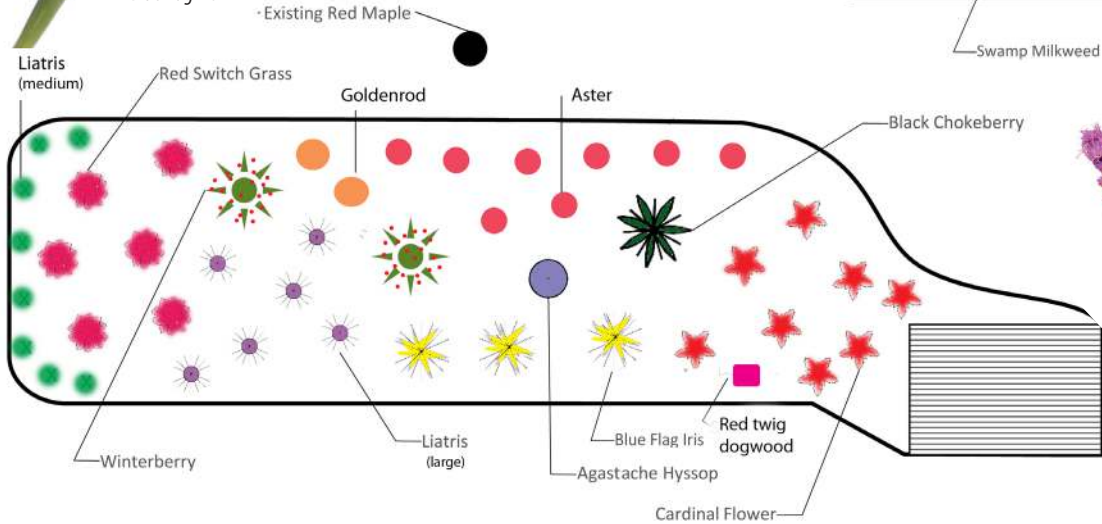
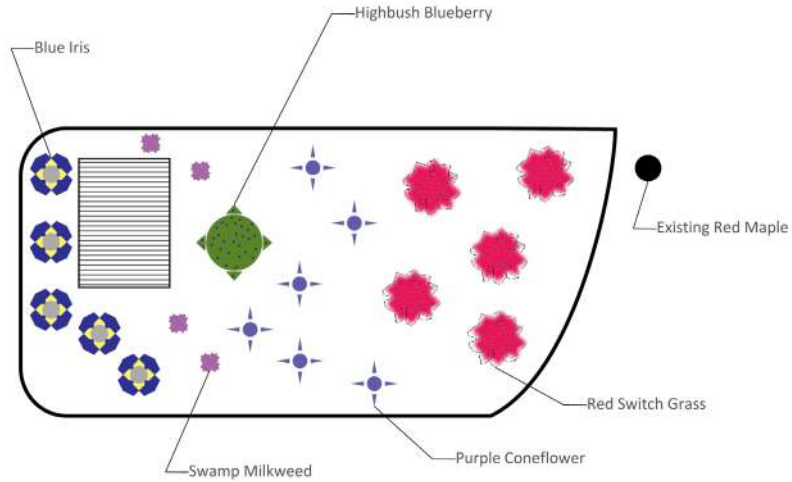


North Courtland Street, East Stroudsburg, Pa.

*In partnership with East Stroudsburg Area School District, Brodhead Watershed Association created rain gardens to catch runoff from the school's parking lot. The soil and native plants absorb polluted water, preventing it from reaching the nearby creek and your water supply.*



Blue flag iris



Liatris



Cardinal flower

BWA thanks Pat Bixler's Environmental Science class, East Stroudsburg Area School District's maintenance department and the Natiello family for their help with planting. The rain gardens were designed and landscaped by Ross & Ross Nursery, Cresco.

COMMON NAME	LATIN NAME	MOISTURE	HEIGHT	SPREAD	SPACING
Blue flag iris	<i>Iris versicolor</i>	WET	2-3'	2-3'	12"
Goldenrod	<i>Solidago genus</i>	WET	Up to 6'		
Cardinal flower	<i>Lobelia cardinalis</i>	WET	3-4'	2-3'	
Purple coneflower	<i>Echinacea purpurea</i>	MOIST	2-4'	18-24"	12"
Red switchgrass	<i>Panicum virgatum</i>	MOIST-DRY	2-3'	2'	18"
Swamp milkweed	<i>Asclepias incarnata</i>	MOIST	3-5'	2'	12"
Anise hyssop	<i>Agastache hyssop</i>	MOIST-DRY	3-6'	1-3'	12"
Aster "New England"	<i>Symphyotrichum novae-angliae</i>	MOIST	4-6'	2-3'	12"
Foxglove	<i>Digitalis purpurea</i>	MOIST	3-6'	6-12"	
Liatris	<i>Liatris</i>	MOIST-DRY	3-6'	1-3'	10"
Yellow iris	<i>Iris pseudacorus</i>	MOIST	3-4'		36-48"

SHRUBS					
Highbush blueberry	<i>Vaccinium corymbosum</i>	MOIST-DRY	5-6'		5-6'
Winter red holly	<i>Ilex verticillata</i>	MOIST-WET	6-8'	6-8'	
Black chokeberry	<i>Aronia melanocarpa</i>	MOIST-DRY	3-6'	6-10'	