

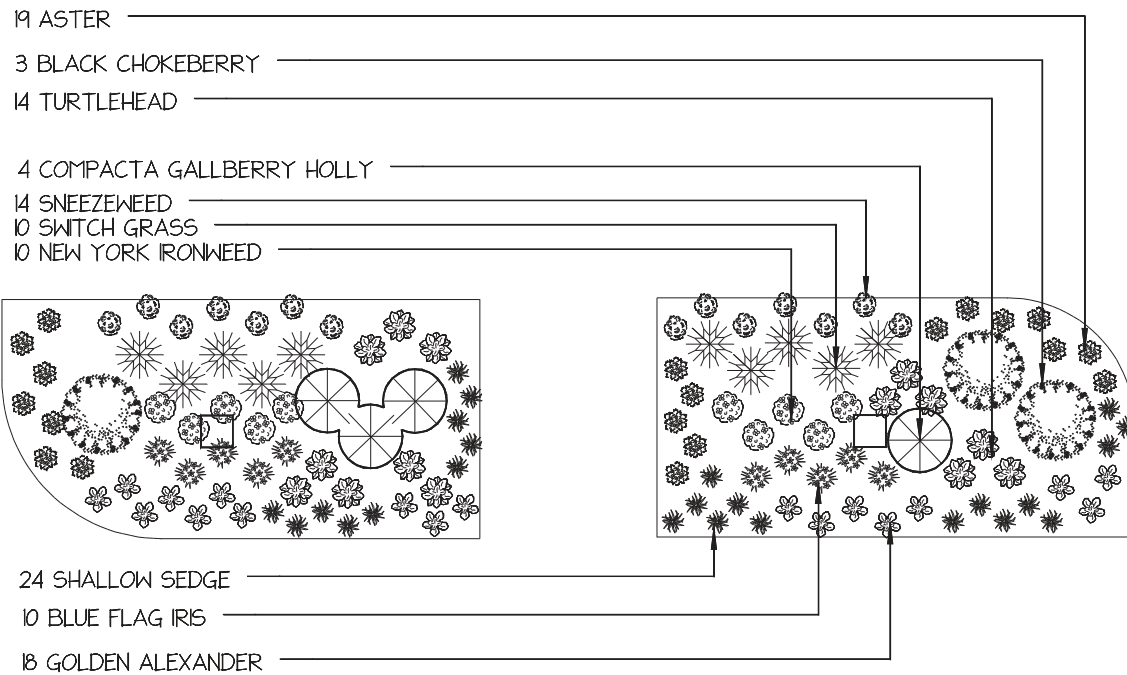


All about the rain garden at Dansbury Depot

Kistler Street, Stroudsburg, Pa.



In partnership with East Stroudsburg Borough and East Stroudsburg Community Alliance, Brodhead Watershed Association created a garden to catch runoff from the depot's roof. The soil and native plants absorb the polluted water, preventing it from reaching nearby Brodhead Creek and your water supply.



Butterfly weed



Aster New England



New York Ironweed

COMMON NAME	LATIN NAME	MOISTURE	HEIGHT	SPREAD
Aster "New England"	<i>Symphyotrichum novae-angliae</i>	moist	4-6'	2-3'
Black chokeberry	<i>Aronia melanocarpa</i>	moist-dry	3-6'	6-10'
Blue flag iris	<i>Iris versicolor</i>	wet	2-3'	2-3'
Gallberry holly	<i>Ilex glabra</i>	medium-wet	5-8'	5-8'
Golden Alexander	<i>Zizia aurea</i>	medium	1-3'	1-2'
Longhair sedge	<i>Carex comosa</i>	wet-moist	1-3'	18"
New York Ironweed	<i>Vernonia noveboracensis</i>	moist	4-7'	2-4'
Red switchgrass	<i>Panicum virgatum</i>	moist-dry	2-3'	2'
Sneezeweed	<i>Helenium autumnale</i>	medium-wet	3-5'	2-3'
Turtlehead	<i>Chelone glabra</i>	medium-wet	2-3'	1-3'



Blue flag iris

Annie Mikols of Monroe County Conservation District designed the site, which East Stroudsburg Borough crews prepared. Plantings were designed by landscape designer Robin Petras. Todd Price Nursery and North Creek Nursery supplied the native plants. Ross & Ross Nursery supplied mulch and helped plant the flowers, along with Brodhead Watershed Association, Penn State Master Gardener and East Stroudsburg Community Alliance volunteers.