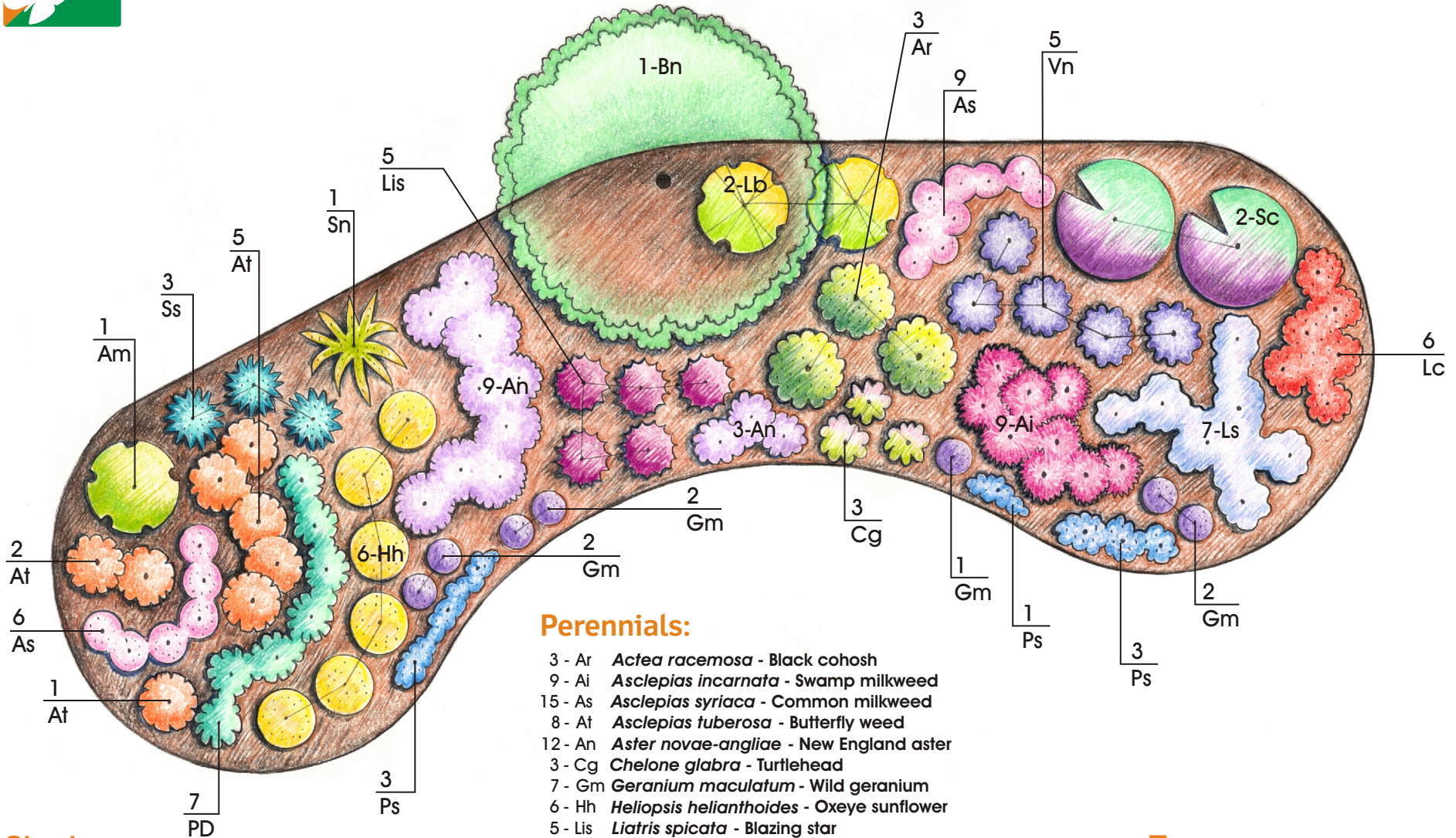




Butterfly & Hummingbird Garden



Shrubs:

- 1 - Am *Aronia melanocarpa* - Black chokeberry
- 2 - Lb *Lindera benzoin* - Spicebush
- 2 - Sc *Sambucus canadensis* - Elderberry

Perennials:

- 3 - Ar *Actea racemosa* - Black cohosh
- 9 - Ai *Asclepias incarnata* - Swamp milkweed
- 15 - As *Asclepias syriaca* - Common milkweed
- 8 - At *Asclepias tuberosa* - Butterfly weed
- 12 - An *Aster novae-angliae* - New England aster
- 3 - Cg *Chelone glabra* - Turtlehead
- 7 - Gm *Geranium maculatum* - Wild geranium
- 6 - Hh *Heliopsis helianthoides* - Oxeye sunflower
- 5 - Lis *Liatris spicata* - Blazing star
- 6 - Lc *Lobelia cardinalis* - Cardinal flower
- 7 - Ls *Lobelia siphilitica* - Great blue lobelia
- 7 - Pd *Penstemon digitalis* - Beard-tongue
- 7 - Ps *Phlox stolonifera* - Creeping phlox
- 3 - Ss *Schizachyrium scoparium* - Little bluestem
- 1 - SN *Sorghastrum nutans* - Indian grass
- 5 - Vn *Vernonia noveboracensis* - New York ironweed

Trees:

- 1 - Bn *Betula nigra* - River birch
(multi-stemmed trunk preferred)

Modifications to the plan might be needed or desired based on space limitations, proximity to buildings or other factors.

You can find this and other native garden templates at www.dcnr.pa.gov/PlantNative

Scale 5/16" = 1'-0"

