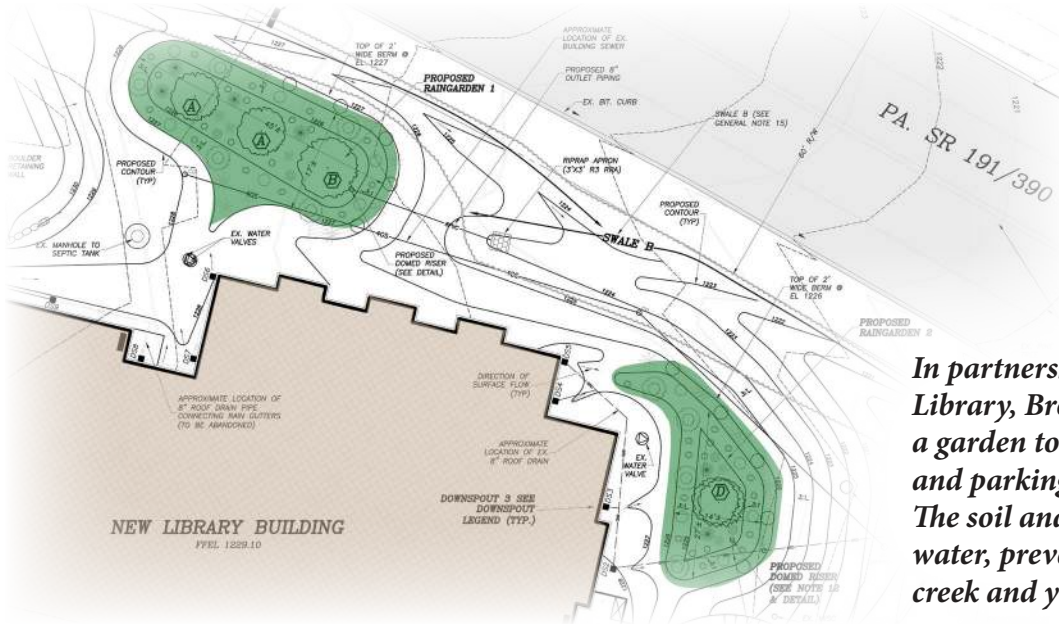




# All about the rain garden at Barrett Paradise Friendly Library



Route 191, Cresco, Pa.



Joe Pye Weed

**In partnership with Barrett Paradise Friendly Library, Brodhead Watershed Association created a garden to catch runoff from the library's roof and parking lot as well as the adjacent roadway. The soil and native plants absorb the polluted water, preventing it from reaching the nearby creek and your water supply.**

COMMON NAME	LATIN NAME	MOISTURE	HEIGHT	SPREAD	SPACING
Blue flag iris	<i>Iris versicolor</i>	WET	2-3'	2-3'	12"
Cardinal flower	<i>Lobelia cardinalis</i>	WET	3-4'	2-3'	
Dense blazing star	<i>Liatris spicata</i>	MOIST	3-4'	3-6'	
Joe Pye Weed	<i>Eupatorium purpureum</i>	MOIST	5-6'	3-4'	2'
Marsh milkweed	<i>Caltha palustris</i>	WET	8-12"	12-18"	1'
New York aster	<i>Aster novae-belgii</i>	MEDIUM	1-2'	1-2'	
Orange coneflower	<i>Rudbeckia fulgida</i>	MEDIUM	2-4'	1'	
Soft rush	<i>Juncus effusus</i>	MOIST	3'	1-2'	12"
Swamp rose mallow	<i>Hibiscus moscheutos</i>	WET	7'	3'	
Tussock sedge	<i>Carex stricta</i>	WET	2'	2'	
Red switchgrass	<i>Panicum virgatum</i>	MOIST-DRY	2-3'	2'	18"
Wild columbine	<i>Aquilegia canadensis</i>	DRY-MEDIUM	1-3'		1'
SHRUBS					
Arrowwood	<i>Viburnum dentatum</i>	MOIST	6-15'	6-15'	
Gro-low fragrant sumac	<i>Rhus aromatica</i>	DRY-MEDIUM	2-6'	6-10'	
Red stem dogwood	<i>Cornus stolonifera</i>	MEDIUM-WET	8'	8'	
Shadblow, serviceberry	<i>Amelanchier canadensis</i>	MEDIUM	25-30'	15-20'	
Winter red holly	<i>Ilex verticillata</i>	MOIST-WET	6-8'	6-8'	



Cardinal flower



Blue flag iris

This garden and supporting green infrastructure was made possible by grants from Water Resources Education Network, the Cora Brooks Foundation and the Brodhead chapter of Trout Unlimited. Brick Linder laid out the garden plans. Wayne Ross of Ross & Ross Nursery in Cresco did the design and planting.