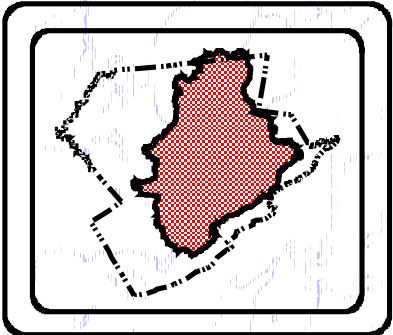
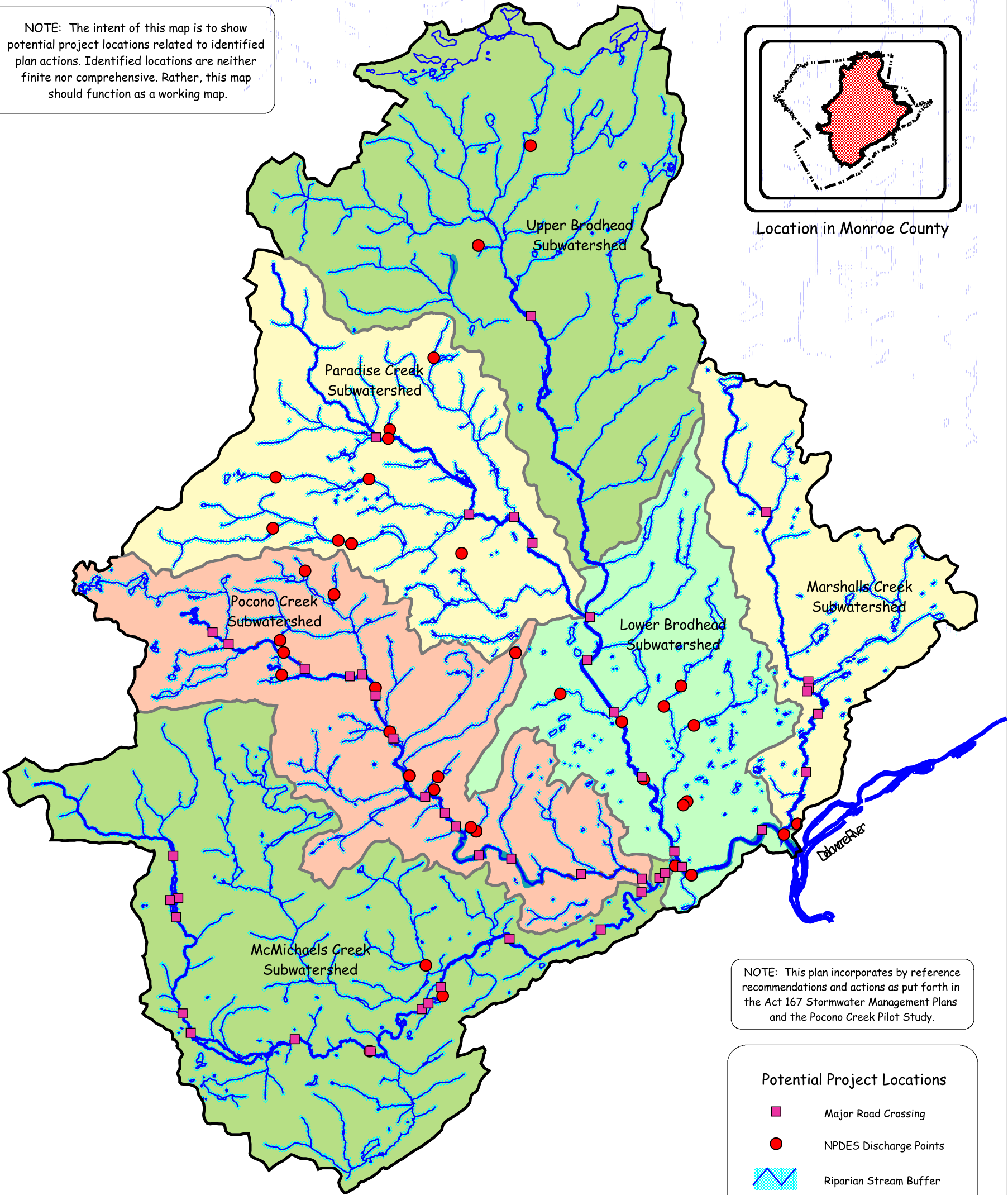


NOTE: The intent of this map is to show potential project locations related to identified plan actions. Identified locations are neither finite nor comprehensive. Rather, this map should function as a working map.



Location in Monroe County

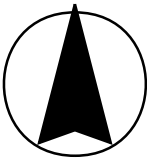


NOTE: This plan incorporates by reference recommendations and actions as put forth in the Act 167 Stormwater Management Plans and the Pocono Creek Pilot Study.

Potential Project Locations

- Major Road Crossing
- NPDES Discharge Points
- Riparian Stream Buffer
- Eroding Streambank
- Critical Riparian Areas nominated as Natural Treasures Registry Sites

- Brodhead Watershed Boundary
- Subwatershed Boundary
- Major Tributary



2 0 2 4 Miles

Potential Project Locations

Water Quality & Quantity - Actions

Brodhead Watershed Conservation Plan

Information used to produce this map was obtained from Monroe County.

Brodhead Watershed Association with BLOSS Associates



October 2001