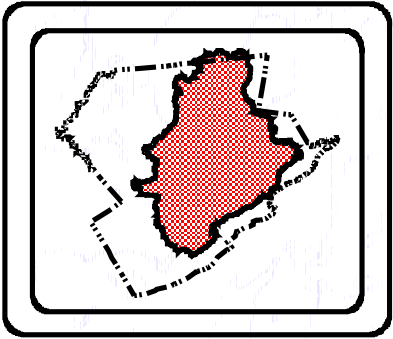
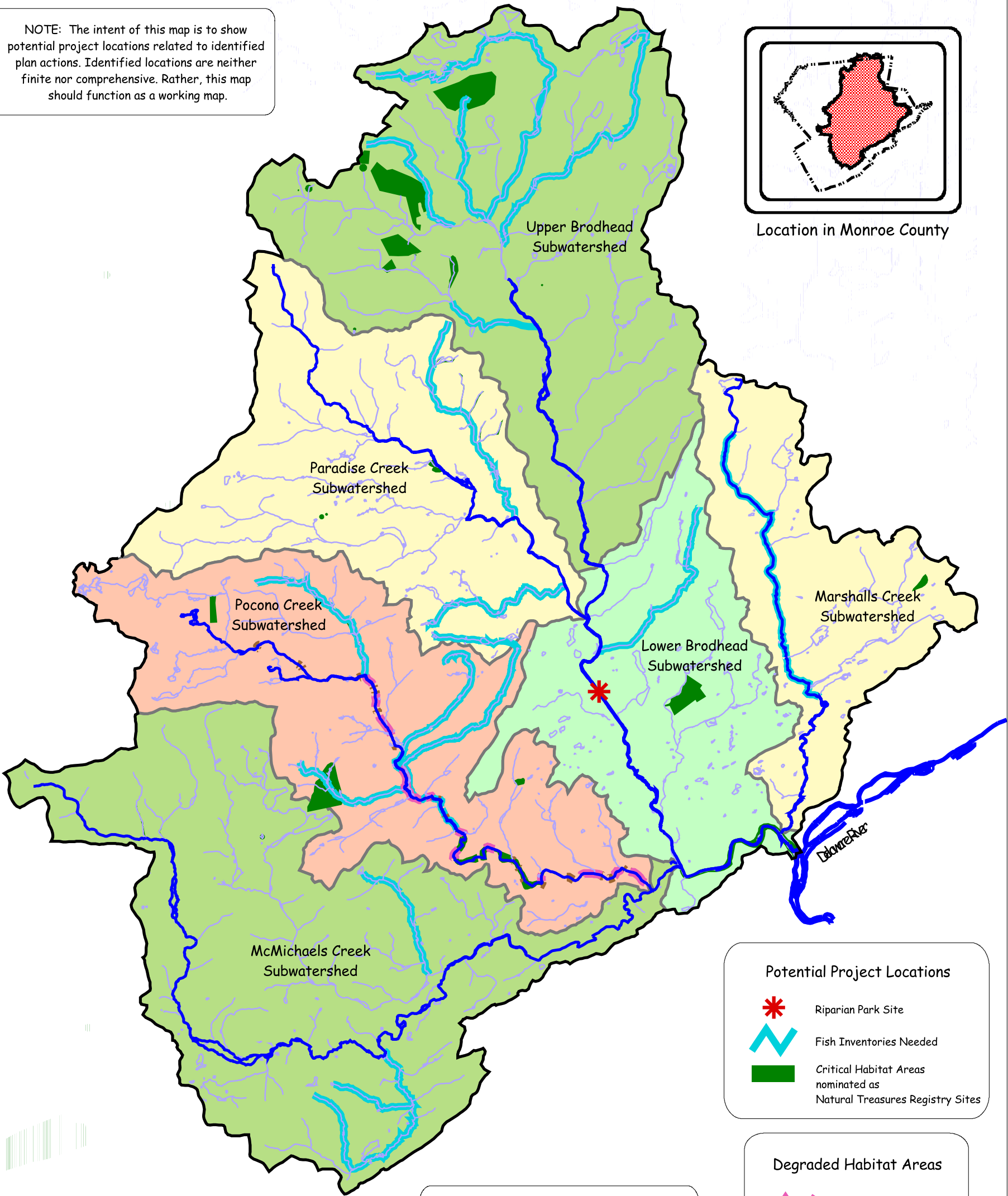


NOTE: The intent of this map is to show potential project locations related to identified plan actions. Identified locations are neither finite nor comprehensive. Rather, this map should function as a working map.



Location in Monroe County



NOTE: This plan incorporates by reference the recommendations and actions as put forth in the Monroe County and Multi-Municipal Open Space Plans relating to the development of greenways that promote the preservation of riparian corridors to create a green infrastructure linking wildlife habitat corridors.

Potential Project Locations

- Riparian Park Site
- Fish Inventories Needed
- Critical Habitat Areas nominated as Natural Treasures Registry Sites

Degraded Habitat Areas

- Poor Habitat Area
- Severe Erosion

- Brodhead Watershed Boundary
- Subwatershed Boundary
- Major Tributaries
- Streams

Potential Project Locations

Fish & Wildlife Habitat - Actions

Brodhead Watershed Conservation Plan

Information used to produce this map was obtained from Monroe County.

Brodhead Watershed Association with BLOSS Associates



October 2001