










MAP A  
AQUIFER RECHARGE POTENTIAL

DEPTH TO  
GROUNDWATER

MONROE COUNTY, PENNSYLVANIA

LEGEND

Depth to Groundwater

-  0-5 Feet
-  5-15 Feet
-  15-50 feet
-  > 50 feet
-  Lakes & Ponds
-  Streams
-  Arterial Roadways
-  County Boundaries
-  Municipal Boundaries

*The County of Monroe makes no express or implied warranties concerning the release of this information. The County of Monroe is unaware of the use or uses to be made of this data. Consequently, the County of Monroe does not warrant this data as fit for any particular purpose.*

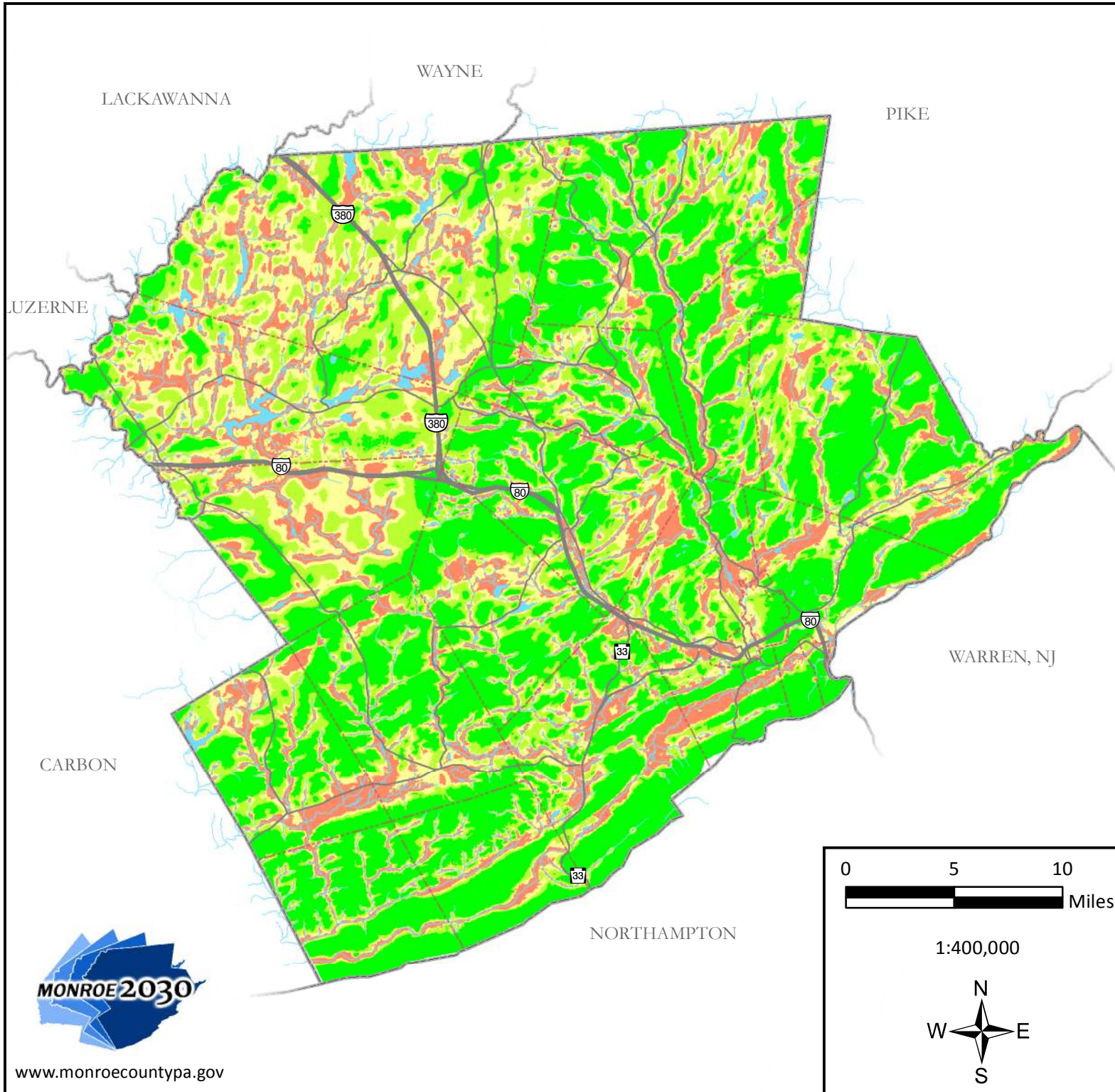
PREPARED BY

**Monroe County  
Planning Commission**

1 Quaker Plaza, Room 106  
Stroudsburg, PA 18360  
(570) 517-3100  
mcpc@monroecountypa.gov

May 2018

18-043



www.monroecountypa.gov