

Table of Contents

Acknowledgements	iii
Introduction	1
Chapter One	
Existing Conditions	6
Chapter Two	
Action Plan	52
Chapter Three	
Implementation Tools	60
Chapter Four	
Stakeholders	73
Chapter Five	
Long-term Watershed Management	85
Chapter Six	
Cost-Benefit	88

List of Figures

Figure 1. Map of Monroe County, Pennsylvania	iv
Figure 2. Map of the Paradise Creek Watershed	v
Figure 3. The Paradise Creek Management Areas	23
Figure 4. Average Flows	31
Figure 5. Phosphorus	32
Figure 6. Nitrate plus Nitrite	33

List of Tables

Table 1. Summary of Results from Impervious Cover and Land Use Analysis	9
Table 2. Paradise Creek Project Demographic Profile	12
Table 3. Industrial/Commercial Vacant Acres and Parcels	13
Table 4. Commercial	14
Table 5. Commercial/Industrial Demographics For the Paradise Creek Watershed	15
Table 6. Lower Paradise Management Area Chemistry	26
Table 7. Butz Run Management Area Chemistry	27
Table 8. Cranberry Creek Management Area Chemistry	27
Table 9. Forest Hills Run Management Area Chemistry	28
Table 10. Lower Swiftwater Management Area Chemistry	28
Table 11. Upper Swiftwater Management Area Chemistry	29
Table 12. Tank Creek/Yankee Run Management Area Chemistry	30
Table 13. Devils Hole Creek Management Area Chemistry	30
Table 14. Upper Paradise Management Area Chemistry	31
Table 15. Scoring Scheme for Low Pocono Riffle/Run < 10 Square Miles	38
Table 16. Scoring Scheme for Low Pocono Riffle/Run > 10 Square Miles	38
Table 17. Macroinvertebrate Trending Results	39
Table 18. Number of Potential Stream Restoration Sites in the Paradise Creek Watershed	45

Acknowledgements

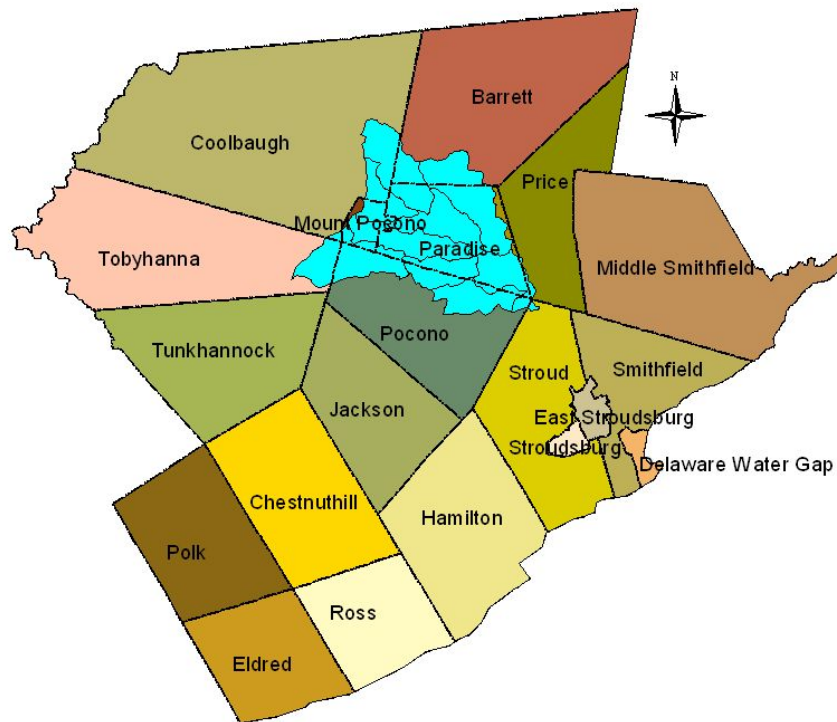
This study would not have been possible without the enthusiastic and generous support of the Brodhead Watershed Association and a Growing Greener Grant from the Pennsylvania Department of Environmental Protection. Special thanks to Past President Jerry Baxter, Executive Director Charles Baughman, President Theresa Merli, Environmental Technician Tom Brady, Edith Stevens and everyone at the Brodhead Watershed Association for their assistance and support. Special thanks also to participants at the Pennsylvania Department of Environmental Protection, including former Northeast Regional Director William McDonnell, current Northeast Regional Director Michael Bedrin, Watershed Specialist and Grant Advisor (now Environmental Program Manager) William Manner, Sherry Wills, Carl DeLuca, Dino Agustini, and Andrew Schweitzer.

Special thanks also to Monroe County Conservation District Manager Craig Todd, Head Resource Conservationist Orianna Richards, Resource Conservationist Carl Meyer, and (most especially) Watershed Specialist Darryl Speicher (now Environmental Educator). Thanks to Monroe County Planning Commission Director John Woodling, Environmental Planner Eric Bartolacci, GIS Coordinator Steven Rinker, and all the folks at both the District and the Commission who volunteer to assist with the annual Monroe County Water Quality Study.

Thanks to all the study team members, including the United States Geological Survey, the Delaware River Basin Commission, Aquatic Resource Consulting, Aqua-Link, Inc., Borton-Lawson Engineering, NA Water Systems, Wilkes University, East Stroudsburg University, Mt. Pocono Municipal Authority, PoconoGIS, Pocono Mountain West Environmental Club, James Sheehan, Scott Dutter, Eileen Fretz and Castle Valley Consultants, Inc. Thanks also to study participants including so many watershed residents, the Paradise Falls Lutheran Association, Lake Swiftwater Club, Mt. Airy Lodge, Alpine Lake POA, Swiftwater Preserve, Henryville Flyfishers, the Brodhead Creek Regional Authority, Pennsylvania Department of Transportation, District 5-0, Sanofi Pasteur, Weiler Brush, Crescent Lodge, Caesar's Paradise Stream Resort, Skytop Lodge, Pocono Manor, Barrett Township, Coolbaugh Township, Pocono Township, Tobyhanna Township, and Mt. Pocono Borough.

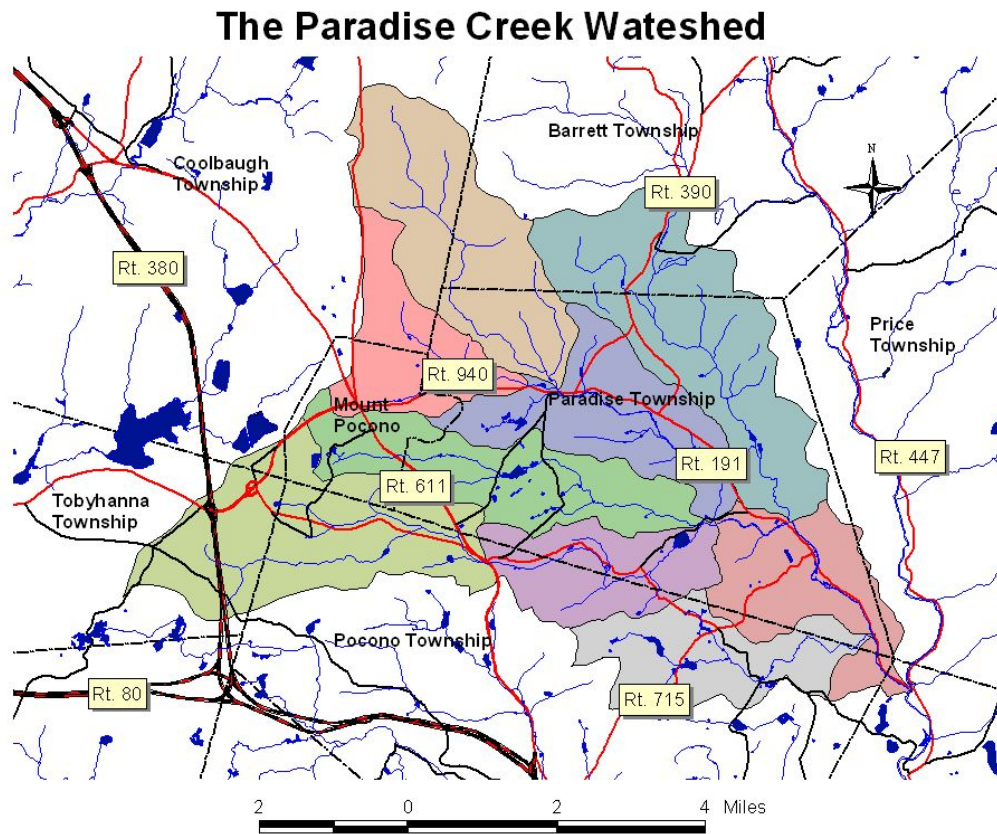
This study could not have happened without the support from Paradise Township, including the use of office facilities, meeting facilities, and food for the team.

Figure 1. Map of Monroe County, Pennsylvania



The Paradise Creek Watershed is located in north-central Monroe County in the northeast region of Pennsylvania. The watershed consists of 44.5 square miles (28,480 acres) of heavily forested headwaters of the larger Brodhead Creek.

Figure 2. Map of the Paradise Creek Watershed



The Paradise Creek Watershed covers almost all of Paradise Township and Mt. Pocono Borough, as well as portions of Barrett Township, Pocono Township, Coolbaugh Township, Tobyhanna Township and very small areas of Price and Stroud Townships.